



MONTHLY MEMBERSHIP PROGRESS REPORT

District 49 B

Results as of: 03/31/2019

GMT: HOWARD HUDSON

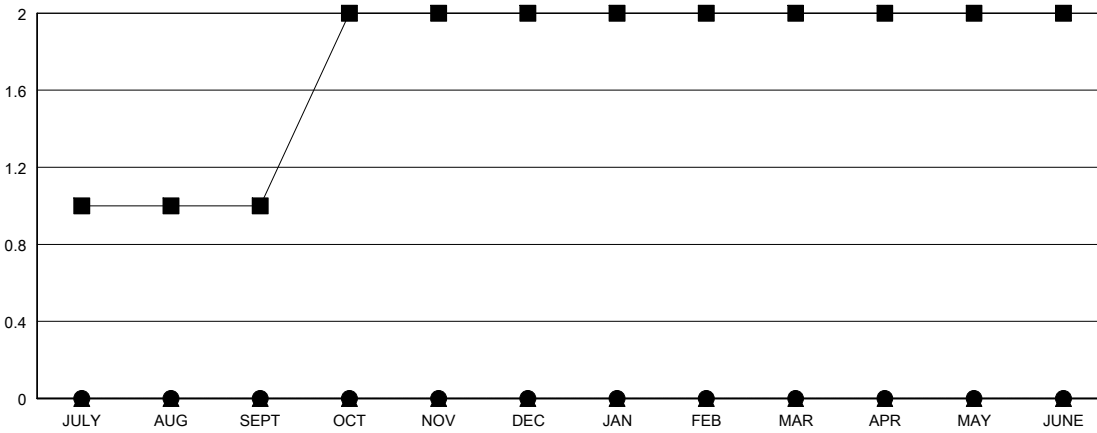
LOCATION ALASKA

GMT CA

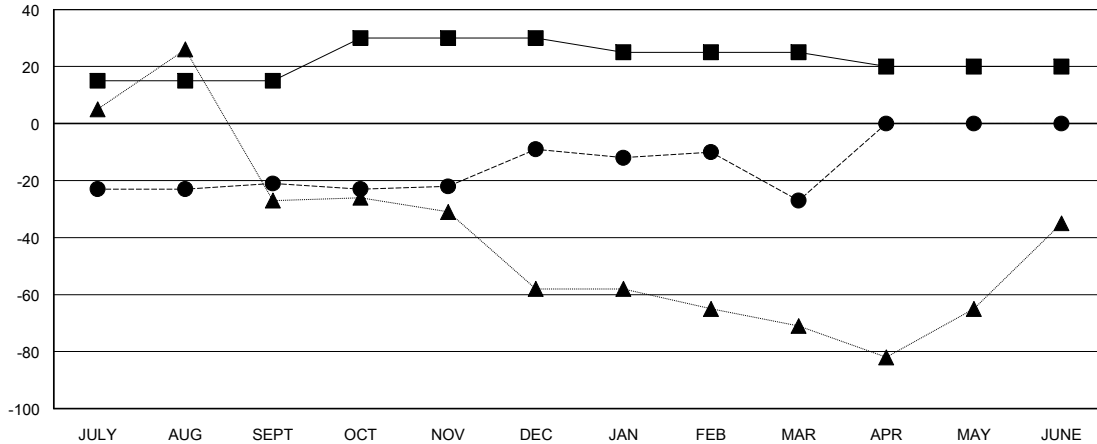
Clubs			
RESULTS FOR 2018-2019			
QUARTER	NEW CLUB GOAL	NEW CLUBS	DROPPED CLUBS
JULY/AUG/SEPT	1	0	0
OCT/NOV/DEC	1	0	0
JAN/FEB/MAR	0	0	1
APR/MAY/JUNE	0	0	0

Members			
RESULTS FOR 2018-2019			
QUARTER	MEMBER GROWTH NET GOAL	MEMBER GROWTH ACTUAL	DROPPED MEMBERS ACTUAL (including transfers)
JULY/AUG/SEPT	15	26	45
OCT/NOV/DEC	15	34	20
JAN/FEB/MAR	-5	17	35
APR/MAY/JUNE	-5	0	0

GOALS AND ACTUAL NEW CLUBS CUMULATIVE



GOALS AND ACTUAL MEMBERS CUMULATIVE



DROPPED CLUBS: 1	16 CLUBS OF 28 ADDED 1 OR MORE NEW MEMBERS	<u>GENDER DISTRIBUTION</u> MALE 471 (58.88%) FEMALE 329 (41.13%) Women Percentage Fiscal Year Goal: 50%
<u>DROPPED MEMBERS</u> DECEASED 7 CLUB CANCELLED 11 OTHER 82 TOTAL 100	CLICK HERE FOR CUMULATIVE MEMBERSHIP DATA	TOTAL FAMILY UNIT MEMBERS 206 FAMILY MEMBERS PAYING HALF DUES 105